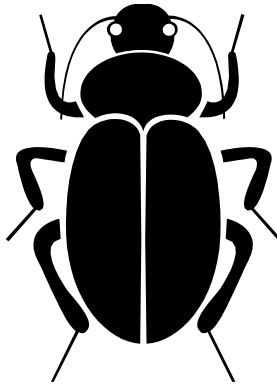


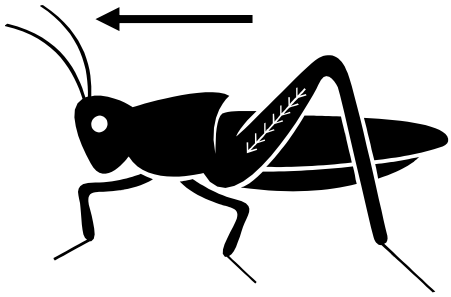
Name: _____ Date: _____

 fruit fly vocabulary 

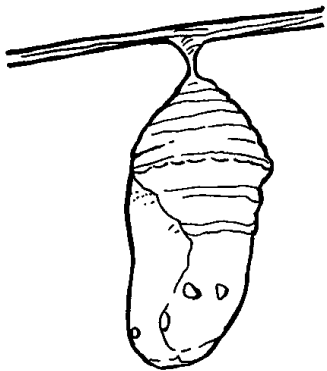
Key Word	Definition	Picture Clue
	The rear body section of an insect.	
	A "feeler" on an insect's head.	
	The case that surrounds and protects a pupa.	
	The young form of an animal that changes as it becomes an adult.	
	Change in shape during growth and development.	
	An insect in a non-feeding stage that is surrounded by a cocoon.	



abdomen



antenna

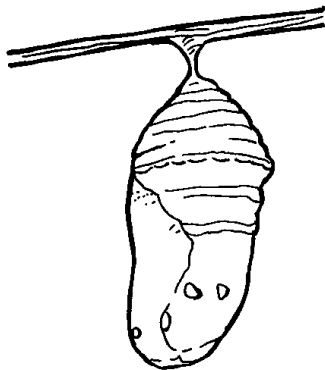
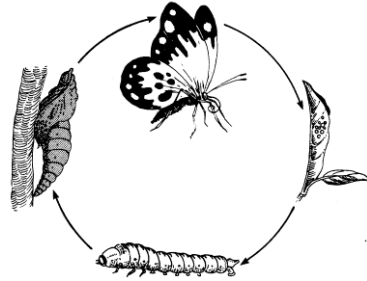
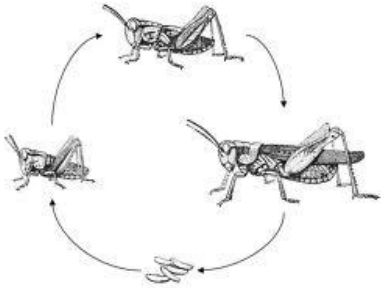


cocoon



larva

metamorphosis



pupa